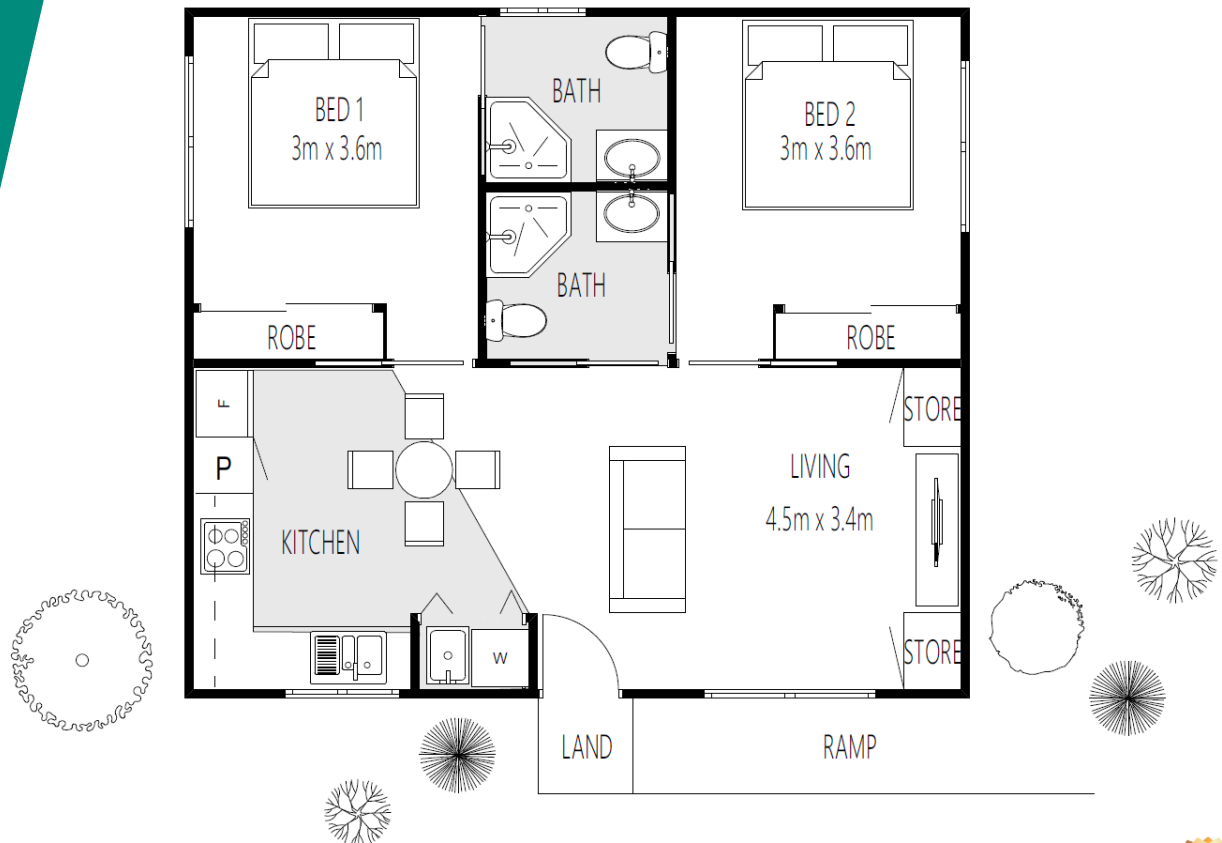


IVANHOE 60

“Keeping families together”

Length: 8.26m
Width: 7.26m
Area: 60m²
Squares: 6.45



Premier Display Village located at 110 Canterbury Road, Bayswater North VIC 3153
Monday – Saturday 9.00am – 5.00pm

(03) 9761 6699

PREMIERHOMESVIC.COM.AU

ACN: 076 828 825 Vic Builders License: CDB-U 51403



SPECIFICATIONS

Subfloor

Cypress Pine Stumps
LVL Bearers & Joists
Fully Enclosed Subfloor up to 700mm
19mm Sheet Flooring

Structure

Timber Construction
450mm Centre Timber Frames
James Hardie Hardieplank Woodgrain Cladding
Merbau Landing & Ramp Allowance to Entrance *Up to 9.8l/m
2400mm Ceiling Height

Roofing

Engineered Roof Trusses
Corrugated Colorbond Roof
Colorbond Gutter & Fascia
90mm PVC Downpipes
Gable Roof

Insulation

R2.7 Batts to External Walls
R3.5 Batts to Ceiling
R1.3 insulation to Roof
R1.8 insulation to Floor

Windows & Doors

Solid Core 4 Panel Entrance Door
Double Glazed Sliding Aluminium Windows
Flyscreens to all Windows
Obscure Glass to Bathroom
280mm Round Skylight to Bathroom

Internal Linings

10mm Plasterboard
75mm Coved Cornice
67mm Bevelled Edge Skirting
42mm Bevelled Edge Architraves
2400mm Flat Ceiling
4 Panel Internal Doors
Chrome Internal Door Handles

Kitchen

Polytec Laminated Benchtops
Polytec Soft Close Drawers & Cupboards
Fisher & Paykel 600mm Electric Cooktop
Fisher & Paykel 600mm Electric Oven
Fisher & Paykel Ducted 600mm
Retractable Rangehood
1.5 Stainless Steel Sink with Drainer
Chrome Mixer Tap

Bathrooms/Laundry

900mm Tiled Showers
Semi Frameless Shower Screens
Chrome Shower Rose & Wall Mixers
Polytec Laminated Vanity Benchtops
Polytec Soft Close Cupboards
Mirror Full Width as Vanities
Oval Insert Basins
Chrome Mixer Tap to Vanities
Dual Flush WC's
Easy Grip WM Taps
30L Trough Unit
Chrome Mixer Tap
Polytec Bifold Doors to Laundry
Polytec Store Cupboards

Flooring

Tiles to Bathrooms
Vinyl to Kitchen & Laundry
Carpet to Bedrooms & Living

Tiling

Kitchen Splashback to a height of 700mm
Vanity Splashbacks to a height of 200mm
Laundry Splashback to a height of 400mm
Showers to a height of 2000mm

Painting

External Haymes Paint (2 Coats)
Internal Haymes Paint (2 Coats)

Wardrobes

Built in Robes
Top Shelf with Hanging Rod Below
1 Bank of 3 Whiteboard Shelves
Mirrored Sliding Doors to Master Bedroom
Vinyl Sliding Doors to Bedroom 2

Electrical

Energy Efficient LED Downlights
Exterior Batten Light to External Door
Double Power Points throughout
Fan/Light/Heater to Bathrooms
Exhaust Fan to Laundry
Smoke Detectors
160Ltr Electric Hot Water System

Preliminary Work

Site Analysis
Design Consultation
Detailed Floor Plan & Elevations
Detailed Site Plan
7 Star Energy Rating Report
Soil Report
Building Permit
Warranty Insurance
10 Year Structural Warranty
Connection Allowance of \$10,000

*Ramps are required for all designs to comply with NCC Regulations. The length and costs of the ramps can only be determined after the Working Drawings are completed and the gradient, size constraints, and other factors are evaluated. The ramp allowance is \$4,200 and includes up to 9.8l/m of straight, unobstructed ramp.

*Conditions Apply - COPYRIGHT

Brochure content is subject to Copyright Law and is subject to the Copyright Act 1965. All rights are retained by Premier Homes (Vic) Pty Ltd. This Plan and design cannot be re-produced in any shape or form without prior written authorisation. Prices subject to change.