

DETACHED EXTENSIONS



"Keeping families together"

Length: 6-8m
Width: 3.6m
Area: 21-28m²

Starting from:
\$81,200



STANDARD QUALITY INCLUSIONS

External Cladding	Hardiplank Woodgrain Weatherboards
Roof & Gutters	Gable Roof - Colorbond
Ceiling Height	2400mm
Flooring	19mm. Sheet Flooring
Windows	Double-Glazed Sliding
Flyscreens	To all opening windows
Steps	2 Steps
Insulation	Blanket to Roof, Ceiling, Walls & Underfloor Batts. 6-star Energy rated when facing North*
Sub Floor	Fully enclosed*
Internal Doors	Smooth or 4-Panel
Cabinetry	Quality Cabinetry Throughout
Wall Tiling	Kitchen, Bathroom & Laundry
Hot Water Service	160 Litre Electric
Vanity Basin	Post-formed with Vitreous China Basin
Shower	900mm x 900mm Fully Moulded
Toilet	Dual Flush
Light Points	Internal Downlight & External Batten
Power Points	To all rooms
Miscellaneous	Mirror above Vanity Safety Switches & Smoke Detector

MOVE IN OPTIONS

Interior Painting - Standard Range
Exterior Painting - Standard Range
Floor Coverings - Standard Range
Vinyl / Carpet

Connection to Services Allowance
*(Up to 10metres)

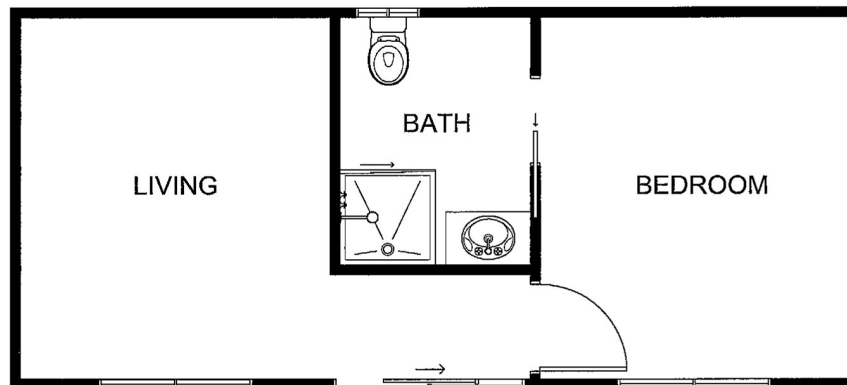
MORE OPTIONS

Veranda
Deck and/or Ramp
Handrails
Heating and Cooling
Grab Rails
Whisper cellular blinds
Lacework

Premier Display Village located at 110 Canterbury Road, Bayswater North Vic 3153
Monday - Saturday 9.00am - 5.00pm Sunday 10.00am - 4.00pm

03) 9761 6699 PREMIERHOMESVIC.COM.AU





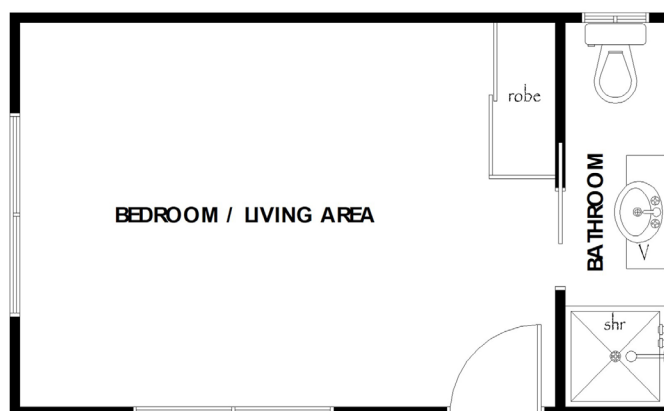
STOCKDALE - 8 X 3.6m / 28.8m²

STARTING FROM - *\$91,500



PARKDALE - 7.2 X 3.6m / 25.9m²

STARTING FROM - *\$90,800



BENDALE - 6 X 3.6m / 21.6m²

STARTING FROM - *\$81,200

***Conditions Apply - COPYRIGHT**

Brochure content is subject to Copyright Law and is subject to the Copyright Act 1965.
All rights are retained by Premier Homes (Vic) Pty Ltd. This Plan and design cannot be re-produced
in any shape or form without prior written authorisation. Prices subject to change.