

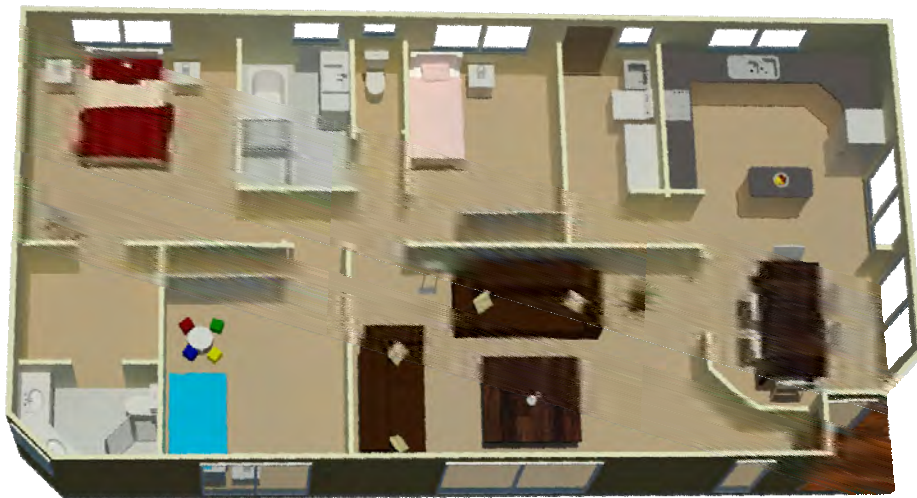
# The Belmont

★ ★ ★ ★ ★ ★  
6-Star Energy Rated  
(when building is facing North)



The magic of the Belmont will surely have you wanting to 'move right in'. The design utilises space to the maximum. With the partially enclosed hexagon shaped Dining area flowing through to the magnificent Kitchen with its central Island Bar, entertaining will be a delight.

The Belmont – The Home with a difference



Premier Homes (Vic) Pty. Ltd. - ACN 076 828 825

**Premier Display Centre**

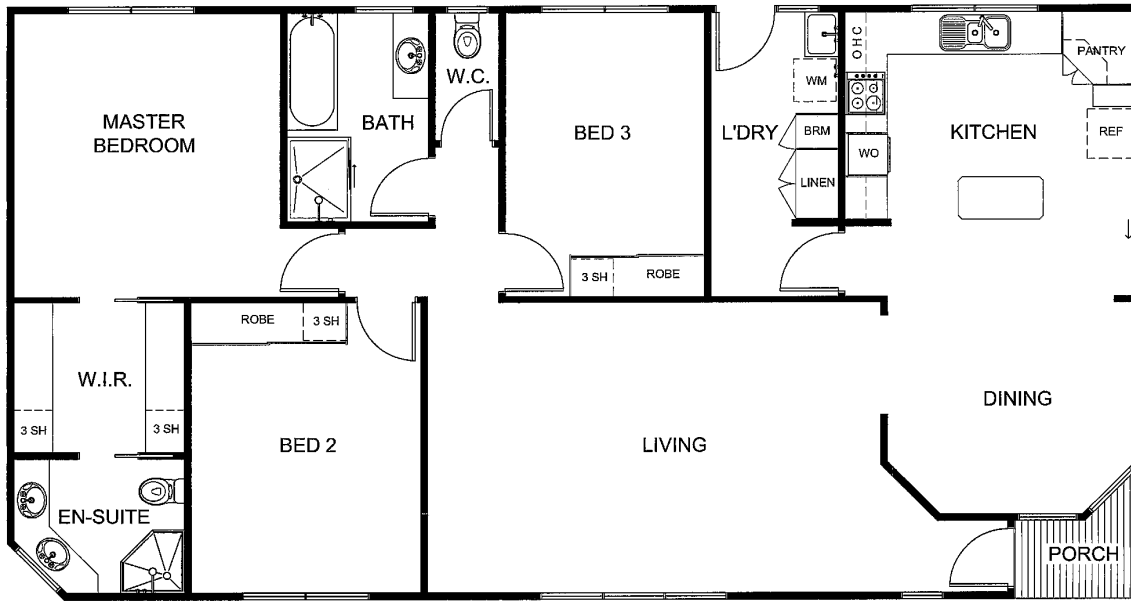
**110 Canterbury Road, Bayswater Vic 3153**

Phone: **(03) 9761 6699** Fax: **(03) 9761 6833**

Website: [www.premierhomesvic.com.au](http://www.premierhomesvic.com.au)

Monday - Saturday 9.00am - 5.00pm Sunday 11.00am - 5.00pm

# The Belmont



House Area  
134.4m<sup>2</sup>  
14.46sq  
(Including Porch)

House Length  
16.00m

House Width  
8.4m

## Standard Inclusions

Built-in Verandah	Under Roofline
External Cladding	Hardiplank Woodgrain Weatherboards
Roof & Gutters	Gabled, Colorbond
Flooring	19mm. Sheet Flooring
Windows	Powder Coated Aluminium*
Flyscreens	To all opening windows
Insulation	To 6-star Energy rating*
Sub Floor	Fully enclosed*
Hot Water Service	Gas Solar or Electric Heat Pump
Steps	2 Steps per entry
Cabinetry	Quality Cabinetry Throughout
Wall Tiling	Kitchen, Bathroom, En-suite & Laundry
Stove	Electric Hot Plate and Wall Oven
Rangehood	Retractable - Recirculating
Sink	Stainless Steel Bowl with Drainer
Cupboards	Walk-in Pantry, Linen & Broom
Kitchen Tap	Flickmixer
Other Taps	Easy-Grip
En-Suite	Corner shower, toilet & twin vanity
Bathroom	Bath, shower and vanity
Vanity Basins	Vitreous China
Toilets	Dual Flush
Exhaust Fan	Fan/Light/Heater - En-suite & Bathroom
Internal Doors	Smooth or 4-Panel
Robes	Walk-in Robe to Master Bedroom Built-in Robes to Bedroom 2 & 3
Lights	Internal & External
Power Points	Power Points to all rooms
Miscellaneous	Safety Switches & Smoke Detectors

## Move in Options

Painting Inside  
Painting Outside  
Floor Coverings  
Service Connections\*

## More Options

Optional Facades  
Verandah  
Deck and/or Ramp  
Handrails  
Heating and Cooling  
Light Fittings  
Curtains

\* Conditions Apply

specifications

COPYRIGHT

This drawing is subject to Copyright Law and is subject to the Copyright Act 1965. All rights are retained by Premier Homes (Vic) Pty Ltd. The plan and design cannot be re-produced in any shape or form without prior written authorisation.