

WATTLE RIDGE GRANNY FLAT

PREMIER
HOMES & GRANNY FLATS

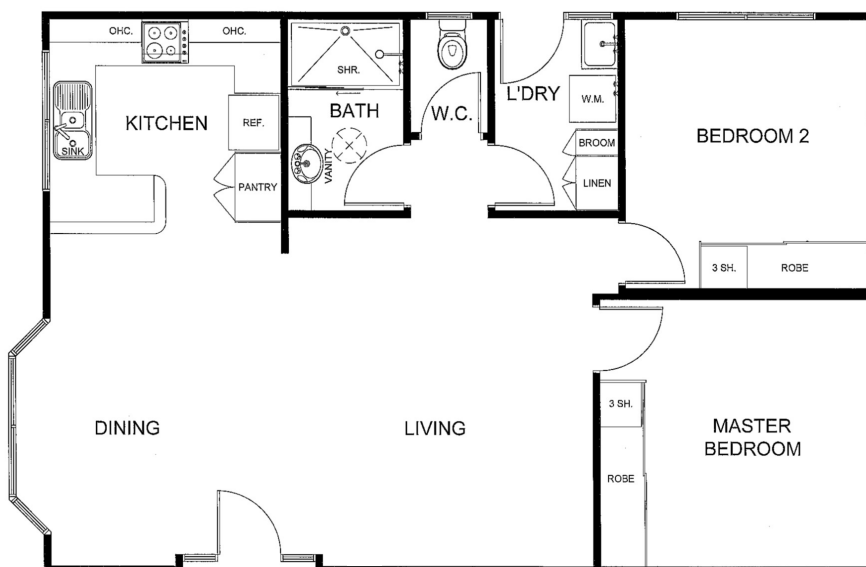
"Keeping families together"

Length: 10.8m
Width: 7.2m
Area: 78m²
Squares: 8.37sq

Starting from:
\$173,860



VILLAGE DISPLAY MODEL



Premier Display Village located at 110 Canterbury Road, Bayswater North Vic 3153
Monday - Saturday 9.00am - 5.00pm Sunday 10.00am - 4.00pm

03) 9761 6699 PREMIERHOMESVIC.COM.AU



SPECIFICATIONS

STANDARD QUALITY INCLUSIONS

External Cladding	Hardiplank Woodgrain Weatherboards
Roof & Gutters	Gable Roof - Colorbond
Ceiling Height	2400mm
Flooring	19mm. Sheet Flooring
Windows	Double-Glazed Sliding
Flyscreens	To all opening windows
Steps	2 Steps
Insulation	Blanket to Roof, Ceiling, Walls & Underfloor Batts. 6-star Energy rated when facing North*
Sub Floor	Fully enclosed*
Internal Doors	Smooth or 4-Panel
Cabinetry	Quality Cabinetry Throughout
Wall Tiling	Kitchen, Bathroom & Laundry
Hot Water Service	160 Litre Electric
Cooking Appliances	Fisher&Paykel Ceramic Hotplate 600mm Fisher&Paykel Oven 600mm
Rangehood	Fisher&Paykel Retractable Recirculating
Sink	Stainless Steel Bowl with Drainer
Vanity Unit	Post-formed with Vitreous China Basin
Taps	Flickmixers & Easy-Grip
Shower	1500mm x 900mm Fully Moulded
Shower Screen	Clear Laminated
Toilet	Dual Flush
Fan/Light/Heater	To Bathroom
Light Points	Internal Downlight & External Batten
Power Points	To all rooms
Miscellaneous	Mirror above Vanity Safety Switches & Smoke Detector

Interior Painting - Standard Range
Exterior Painting - Standard Range
Floor Coverings - Standard Range
Vinyl / Carpet
Connection to Services Allowance
*(Up to 10metres)

VILLAGE DISPLAY UPGRADES

*\$199,495

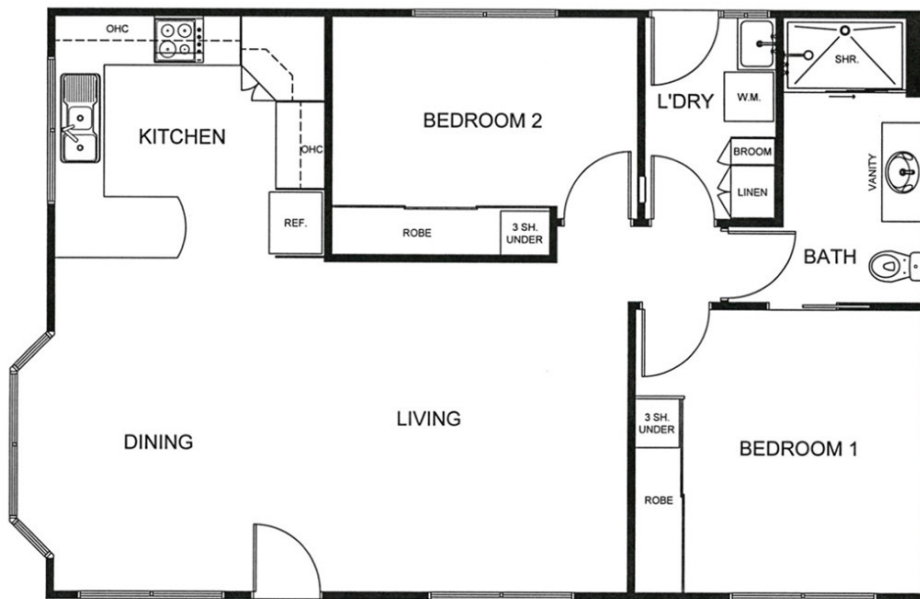
Feature Front Door & Sidelight
Hi-Gloss Vinyl Wrap Doors to Kitchen & bathroom
Painted Feature Walls
Extra External Lights
Awning Windows
Heating and Cooling Split System
Rear access Door to Cabinetry
Flat Verandah & Deck with Sailwire

MORE OPTIONS

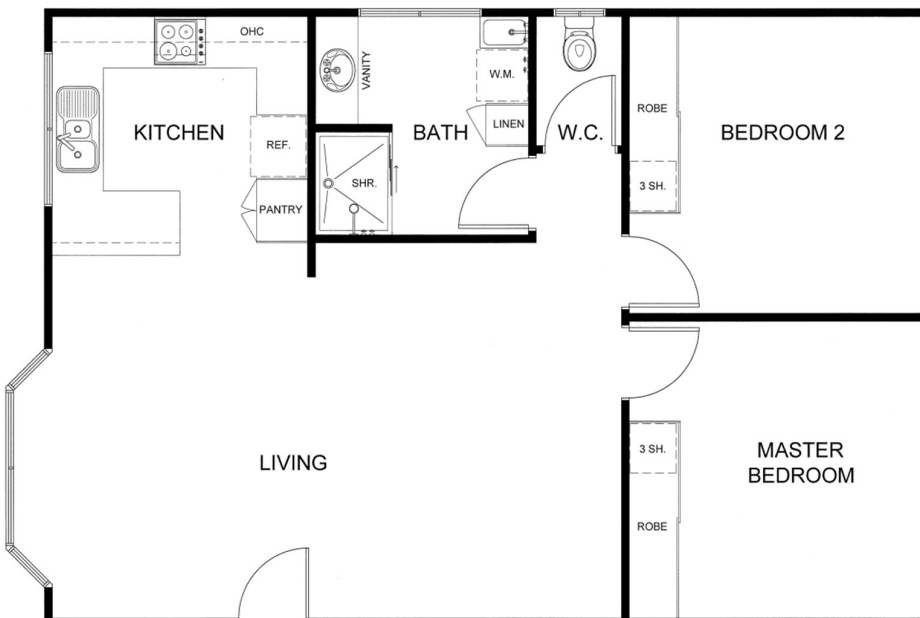
Light Pendants
Grab Rails
Curtains
Lacework



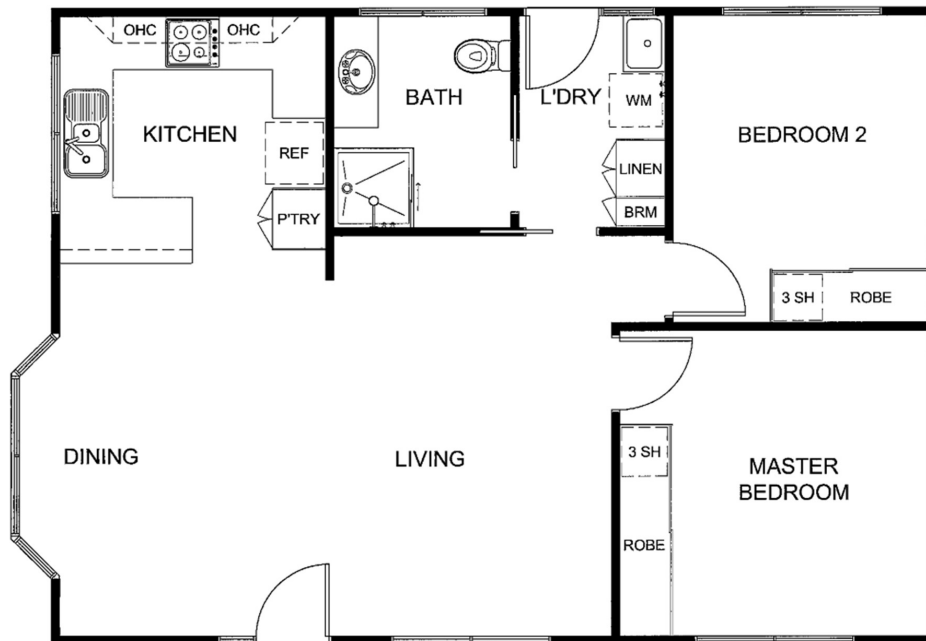
ADDITIONAL FLOOR PLANS



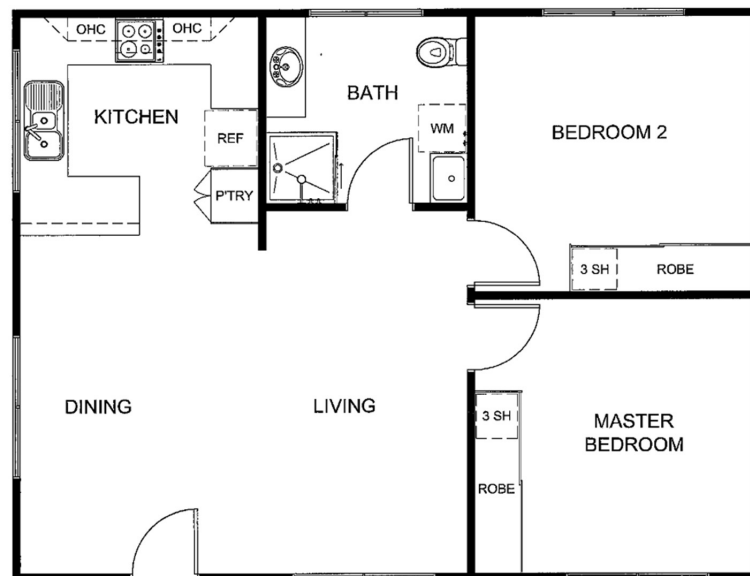
WATTLE GRANGE - 10.8 x 7.2m / 78m²
STARTING FROM - *\$177,300



WATTLE CREST - 10.4 x 7.2m / 75m²
STARTING FROM - *\$166,700



WATTLE VALE - 10 x 7.2m / 72m²
STARTING FROM - *\$164,800



WATTLE PARK - 9.4 x 7.2m - 68m²
STARTING FROM - *\$153,300

***Conditions Apply - COPYRIGHT**

Brochure content is subject to Copyright Law and is subject to the Copyright Act 1965.
All rights are retained by Premier Homes (Vic) Pty Ltd. This Plan and design cannot be re-produced
in any shape or form without prior written authorisation. Prices subject to change.