

# The Broadwood\*

★★★★★★  
6-Star Energy Rated  
(when building is facing North)



◆ English Colonial Façade pictured

On entering the Broadwood, you find yourself amazed by the spacious living areas with its array of windows. The light airy feel is enhanced by the floor to ceiling walk-in-bay windows. If you wish, the bay windows are able to have window seats fitted adding to the country charm.

Classic Country- style home, practical and well laid out for family living.



Premier Homes (Vic) Pty. Ltd. - ACN 076 828 825

**Premier Display Centre**

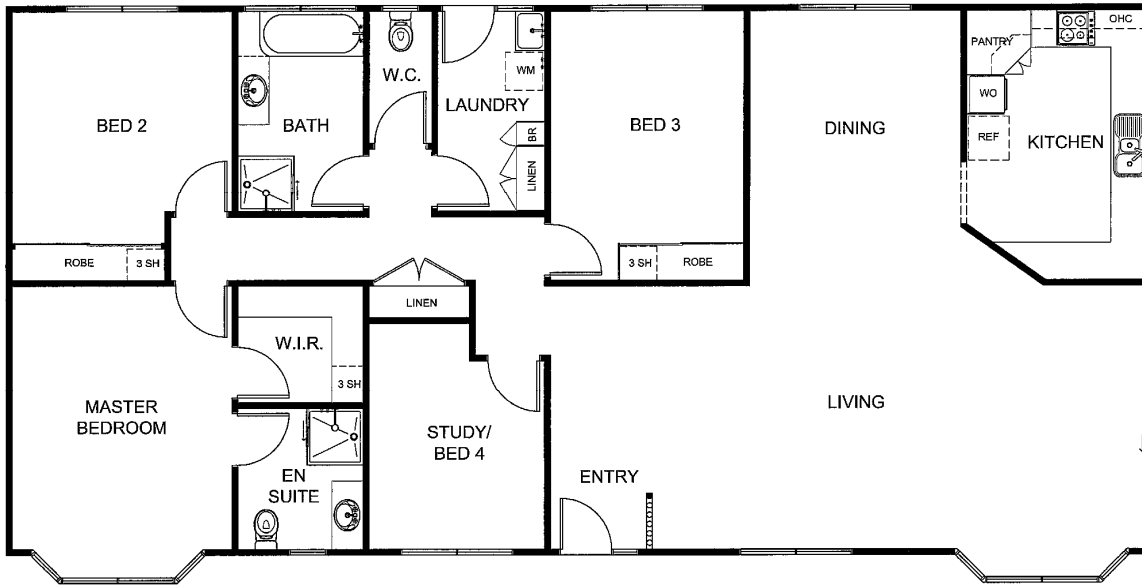
**110 Canterbury Road, Bayswater Vic 3153**

Phone: (03) 9761 6699 Fax: (03) 9761 6833

Website: [www.premierhomesvic.com.au](http://www.premierhomesvic.com.au)

Monday - Saturday 9.00am - 5.00pm Sunday 11.00am - 5.00pm

# The Broadwood\*



\*Formerly known as The Broadview

House Area  
161.04m<sup>2</sup>  
17.33sq (excl Bays)  
Bays 2.1m<sup>2</sup>

House Length  
18.3m

House Width  
8.80m

## Standard Inclusions

External Cladding	Hardiplank Woodgrain Weatherboards
Roof & Gutters	Gabled, Colorbond™
Flooring	19mm. Sheet Flooring
Windows	Powder Coated Improved Aluminium**
Flyscreens	To all opening windows
Insulation	To 6-star Energy rating**
Sub Floor	Fully enclosed**
Hot Water Service	Gas Solar or Electric Heat Pump
Steps	2 Steps per entry
Cabinetry	Quality Cabinetry Throughout
Wall Tiling	Kitchen, Bathroom, En-suite & Laundry
Stove	Electric Hot Plate and Wall Oven
Rangehood	Retractable - Recirculating
Sink	Stainless Steel Bowl with Drainer
Cupboards	Walk-in Pantry, Linen & Broom
Kitchen Tap	Flickmixer
Other Taps	Easy-Grip
En-Suite	Shower with screen, vanity & toilet
Bathroom	Bath, shower and vanity
Vanity Basins	Vitreous China
Toilets	Dual Flush
Exhaust Fan	Fan/Light/Heater - En-suite & Bathroom
Internal Doors	Smooth or 4-Panel
Robes	Walk-in Robe to Master Bedroom Built-in Robes to Bedrooms 2 & 3
Lights	Internal & External
Power Points	Power Points to all rooms

## Move in Options

- Painting Inside
- Painting Outside
- Floor Coverings
- Service Connections\*\*

## More Options

- Optional Facades
- Verandah
- Deck and/or Ramp
- Porch
- Handrails
- Recessed Ceiling
- Heating and Cooling
- Light Fittings
- Curtains

\*\* Conditions Apply

specifications

COPYRIGHT

This drawing is subject to Copyright Law and is subject to the Copyright Act 1965. All rights are retained by Premier Homes (Vic) Pty Ltd. The plan and design cannot be re-produced in any shape or form without prior written authorisation.